

FOR LEASE > RETAIL

AVAILABLE: 7,639 SF

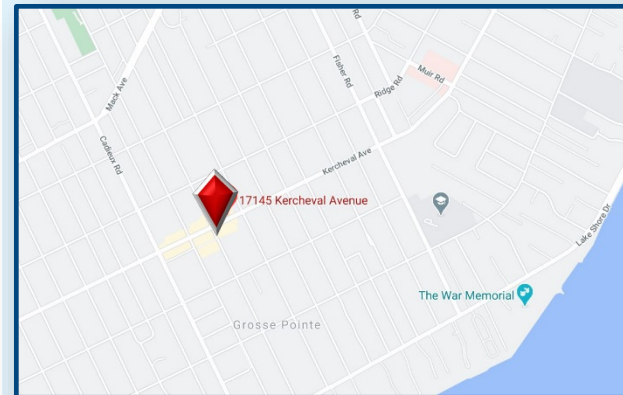


17145 Kercheval Avenue, Grosse Pointe, MI



Great retail opportunity in Grosse Pointe on sought after Kercheval. Previous furniture store offers wide open space, a fireplace for ambience/display area and two rooms of display shelves for interior design storage. Large service desk, in suite rest rooms and kitchen/café area along with glass walled office ideal for sales manager. Lots of window frontage for showcase ability and side door access from walk through opportunities for interior building businesses.

- High end finishes
- Busy upscale retail area
- 7,639 SF available
- Turn-Key Opportunity
- 108' of retail window frontage



COLLIERS INTERNATIONAL
2 Corporate Drive | Suite 300
Southfield, MI 48076
www.colliers.com

Colliers International is a worldwide affiliation of independently owned and operated companies.

The information contained herein has, we believe, been obtained from reliable sources and we have no reason to doubt the accuracy thereof. All such information is submitted, subject to errors, omissions or changes in condition prior to sale, lease or withdrawal without notice. All information contained herein should be verified by the person relying thereon. We have not made and will not make any warranty or representation as to the condition of the property nor the presence of any hazardous substances or any environmental or other conditions that may affect the value or suitability of the property.

FOR LEASE > RETAIL

AVAILABLE: 7,639 SF



17145 Kercheval Avenue, Grosse Pointe, MI



COLLIERS INTERNATIONAL
2 Corporate Drive | Suite 300
Southfield, MI 48076
www.colliers.com

Contact Us

MIRIAM RHEIN

DIR | +1 248 226 1656

MOB | +1 248 535 0335

MAIN | +1 248 540 1000

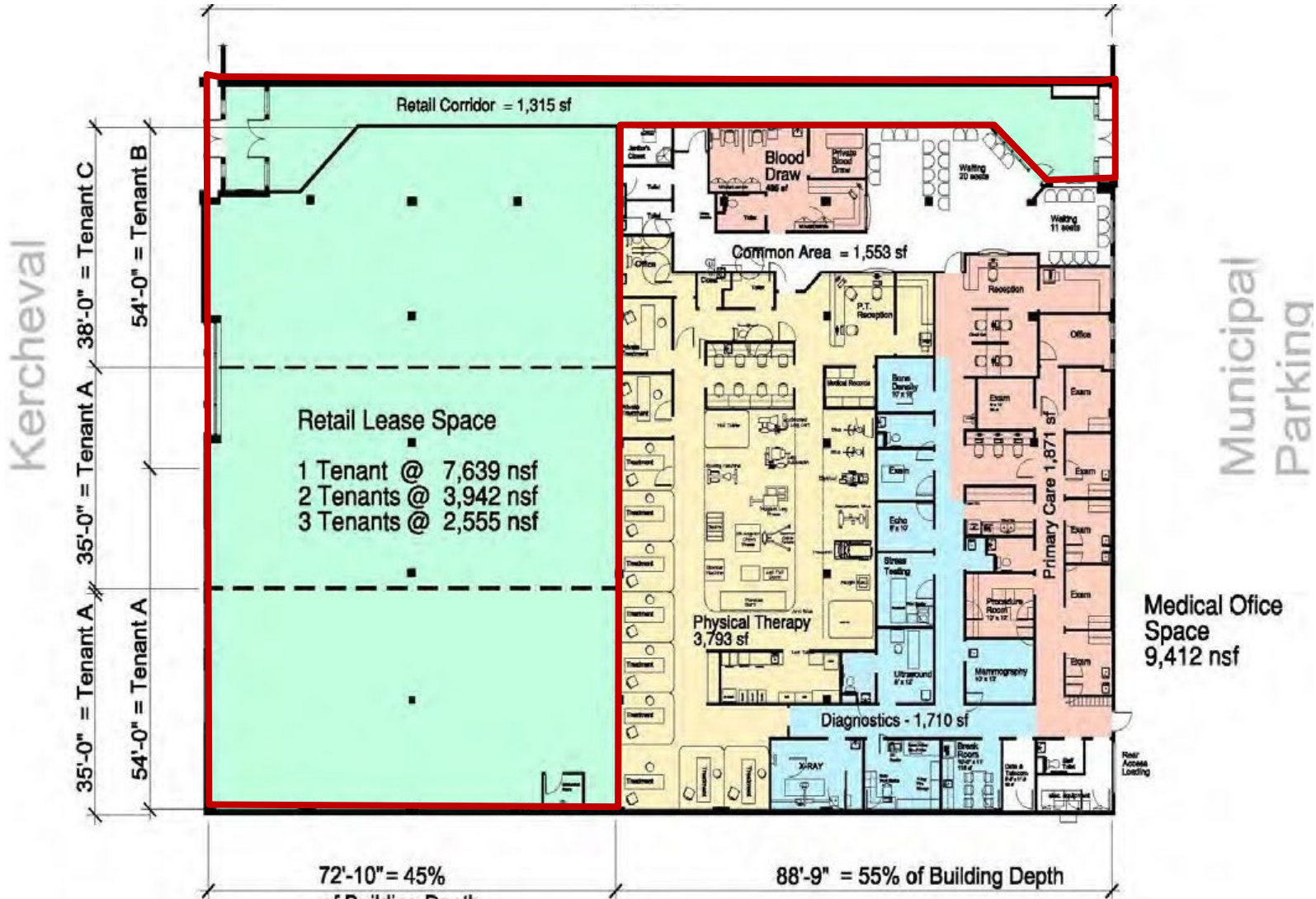
miriam.rhein@colliers.com

FOR LEASE > RETAIL



AVAILABLE: 7,639 SF

17145 Kercheval Avenue, Grosse Pointe, MI



COLLIERS INTERNATIONAL
 2 Corporate Drive | Suite 300
 Southfield, MI 48076
www.colliers.com

Contact Us

MIRIAM RHEIN

DIR | +1 248 226 1656

MOB | +1 248 535 0335

MAIN | +1 248 540 1000

miriam.rhein@colliers.com

TRAFFIC COUNTS

17145 Kercheval Ave, Grosse Pointe, Michigan, 48230
 17145 Kercheval Ave, Grosse Pointe, Michigan, 48230



Closest Traffic Counts

Street	Count	Type	Year	Dist.	Street	Count	Type	Year	Dist.
Kercheval Ave	10,200	AADT	1995	.16	Mack Ave	10,880	AADT	2010	.50
St Clair Ave	3,719	AADT	2006	.22	Fisher Rd	5,600	AADT	1995	.56
Cadieux Rd	9,045	AADT	2006	.24	Mack Ave	10,830	ADT	2010	.57
Kercheval	20,400	AADT	1995	.25	E Jefferson Ave	17,710	ADT	2006	.58
Cadieux Rd	10,200	AADT	1995	.32	Kercheval Ave	10,200	AADT	1995	.59
Kercheval	20,400	AADT	1995	.37	Mack Ave	15,229	AADT	2010	.60
Cadieux Rd	9,274	ADT	2004	.38	E Jefferson Ave	13,258	AADT	1995	.60
Cadieux Rd	20,175	AADT	1995	.44	Kercheval	7,443	AADT	2012	.65
Kercheval Ave	6,112	AADT	2010	.46	Mack Ave	10,830	ADT	2010	.69
Mack Ave	15,020	ADT	2010	.49	Hereford St	18,707	ADT	1996	.70

This document has been prepared by Colliers International for advertising and general information only. Colliers International makes no guarantees, representations or warranties of any kind, expressed or implied, regarding the information including, but not limited to, warranties of content, accuracy and reliability. Any interested party should undertake their own inquiries as to the accuracy of the information. Colliers International excludes unequivocally all inferred or implied terms, conditions and warranties arising out of this document and excludes all liability for loss and damages arising there from. This publication is the copyrighted property of Colliers International and /or its licensor(s). © 2020. All rights reserved. Data sources: ESRI, HERE data, Kalibrate



Demographic One Page Summary

17145 Kercheval Ave, Grosse Pointe, Michigan, 48230
 17145 Kercheval Ave, Grosse Pointe, Michigan, 48230

Prepared by Colliers International

Latitude: 42.390683

Longitude: -82.914855

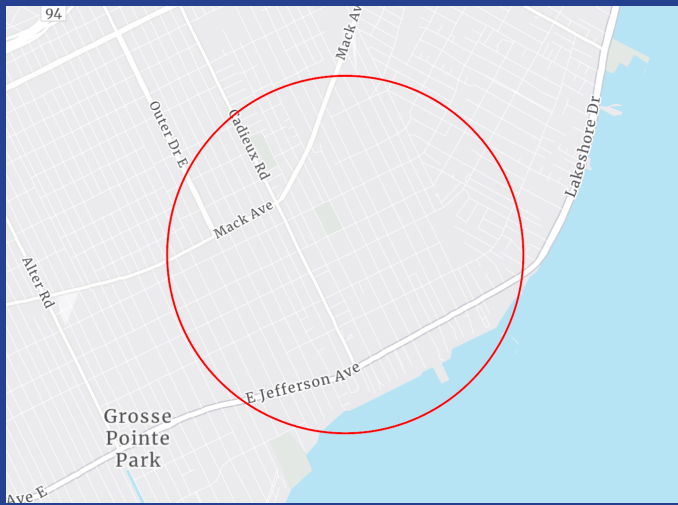
	1 mile radius	2 mile radius	3 mile radius
Current Year Summary			
Total Population	15,047	48,435	90,384
Total Households	5,881	18,369	34,055
Total Family Households	4,109	12,396	22,580
Average Household Size	2.55	2.62	2.63
Median Age	46.3	40.8	39.3
Population Age 25+	10,445	32,638	60,362
2010-2020 Population: Annual Growth Rate	0.02%	-0.31%	-0.43%
Five Year Projected Trends: Annual Rate			
Population	-0.12%	-0.24%	-0.30%
Households	-0.09%	-0.19%	-0.25%
Families	-0.14%	-0.26%	-0.31%
Median Household Income	1.77%	1.75%	1.44%
Current Year Population by Sex			
Male Population	7,206	22,981	42,514
% Male	48%	47%	47%
Female Population	7,840	25,454	47,870
% Female	52%	53%	53%
Current Year Race and Ethnicity			
Total	15,047	48,435	90,384
White Alone	80.1%	53.0%	39.2%
Black Alone	15.6%	42.2%	56.5%
American Indian Alone	0.1%	0.2%	0.3%
Asian Alone	1.7%	1.5%	1.3%
Pacific Islander Alone	0.0%	0.0%	0.0%
Some Other Race Alone	0.5%	0.5%	0.4%
Two or More Races	1.9%	2.5%	2.3%
Hispanic Origin	2.5%	2.3%	1.8%
Diversity Index	36.6	56.1	54.4
Current Year Educational Attainment			
Total	10,442	32,638	60,362
Less than 9th Grade	1.3%	1.5%	2.1%
9th - 12th Grade, No Diploma	2.6%	5.1%	8.3%
High School Graduate	9.1%	15.9%	20.2%
GED/Alternative Credential	2.1%	3.6%	4.7%
Some College, No Degree	13.5%	19.1%	21.5%
Associate Degree	4.7%	6.8%	6.9%
Bachelor's Degree	33.2%	25.0%	19.2%
Graduate/Professional Degree	33.5%	22.9%	17.1%
Income and Households Summary			
2020 Median Household Income	\$107,644	\$71,008	\$53,922
Average Household Income	\$159,628	\$116,186	\$92,868
Per Capita Income	\$62,214	\$44,102	\$34,968
Summary Business Data			
Total Businesses	531	1,289	1,947
Total Daytime Population	16,916	49,251	86,157
Daytime Population: Workers	8,173	19,457	27,381
Daytime Population: Residents	8,743	29,794	58,776

Data Notes:

- Household population includes persons not residing in group quarters. Average Household Size is the household population divided by total households. Persons in families include the householder and persons related to the householder by birth, marriage, or adoption.
- Income represents the preceding year, expressed in current dollars. Household income includes wage and salary earnings, interest dividends, net rents, pensions, SSI and welfare payments, child support, and alimony.
- Per Capita Income represents the income received by all persons aged 15 years and over divided by the total population.
- Persons of Hispanic Origin may be of any race. The Diversity Index measures the probability that two people from the same area will be from different race/ethnic groups.

Population trends & key indicators

17145 Kercheval Ave, Grosse Pointe, Michigan, 48230 | 1 mile radius



15,047	5,881	2.55	46.3	\$107,644	\$383,591	254	123	37
Population	Households	Avg size household	Median age	Median household income	Median home value	Wealth index	Housing affordability	Diversity index

Mortgage indicators



\$20,320

Avg spent on mortgage & basics



14.9%

Percent of income for mortgage

Population by generation



8.1%

Greatest gen: born 1945/earlier



27.3%

Baby boomer: born 1946 to 1964



21.8%

Generation x: born 1965 to 1980



14.9%

Millennial: born 1981 to 1998



24.3%

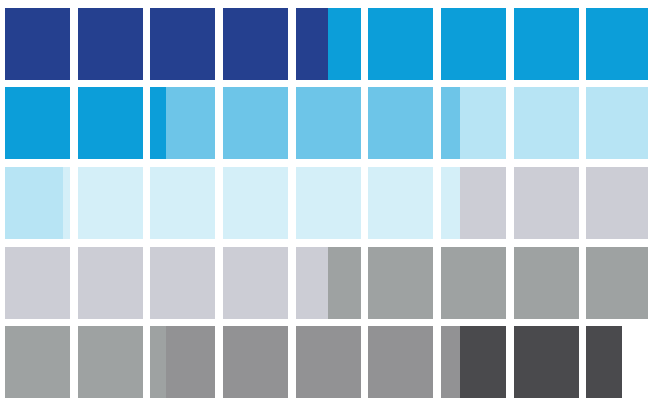
Generation z: born 1999 to 2016



3.6%

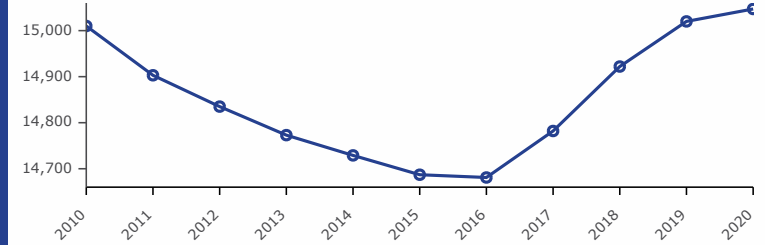
Alpha: born 2017 to present

Population by age

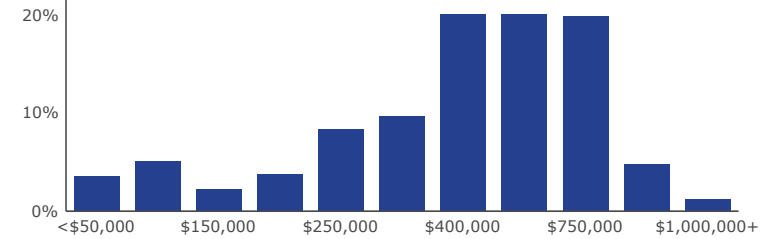


Age 0-9 (%)	Age 10-19 (%)	Age 20-29 (%)	Age 30-39 (%)	Age 40-49 (%)	Age 50-59 (%)	Age 60-69 (%)	Age 70-79 (%)	Age 80+ (%)
10%	15%	9%	8%	12%	16%	15%	9%	5%

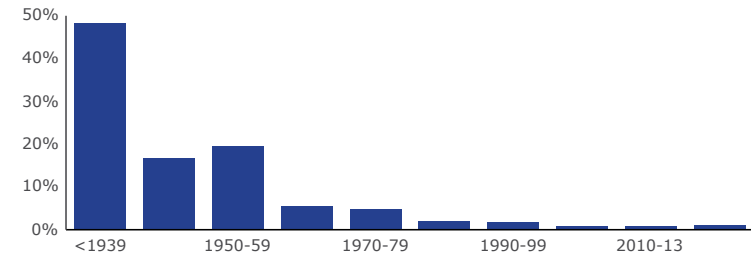
Historical trends: population



Home value



Housing: year built



U.S. Census Bureau, Esri forecasts for 2020 and 2025, Esri Vintage 2020 Time Series

Population trends & key indicators

17145 Kercheval Ave, Grosse Pointe, Michigan, 48230 | 2 mile radius



48,435	18,369	2.62	40.8	\$71,008	\$283,027	163	104	56
Population	Households	Avg size household	Median age	Median household income	Median home value	Wealth index	Housing affordability	Diversity index

Mortgage indicators



\$13,823

Avg spent on mortgage & basics



16.7%

Percent of income for mortgage

Population by generation



6.5%

Greatest gen: born 1945/earlier



23.8%

Baby boomer: born 1946 to 1964



20.6%

Generation x: born 1965 to 1980



19.9%

Millennial: born 1981 to 1998



24.9%

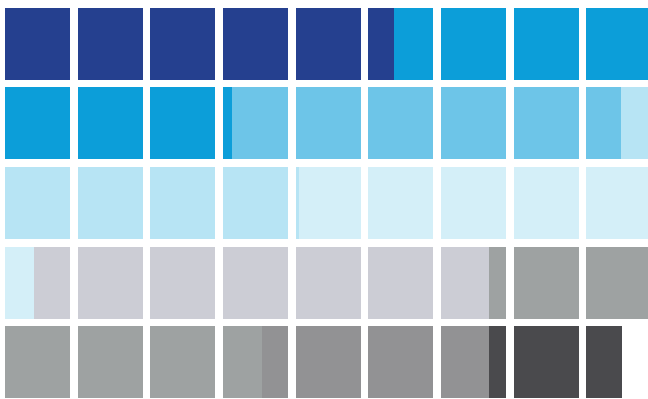
Generation z: born 1999 to 2016



4.3%

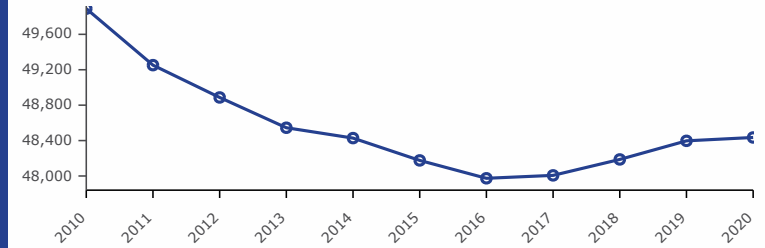
Alpha: born 2017 to present

Population by age

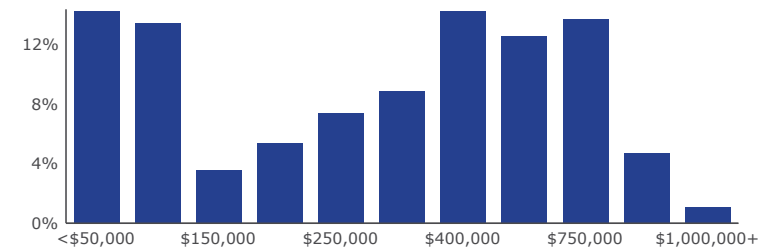


Age 0-9 (%)	Age 10-19 (%)	Age 20-29 (%)	Age 30-39 (%)	Age 40-49 (%)	Age 50-59 (%)	Age 60-69 (%)	Age 70-79 (%)	Age 80+ (%)
12%	15%	12%	10%	12%	13%	7%	14%	4%

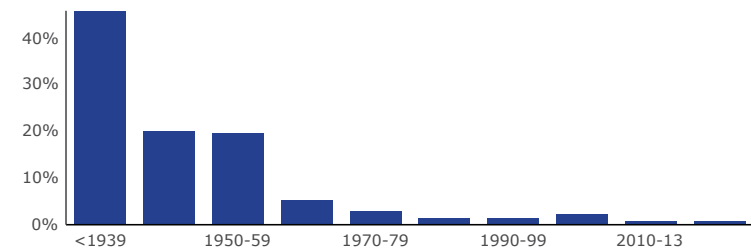
Historical trends: population



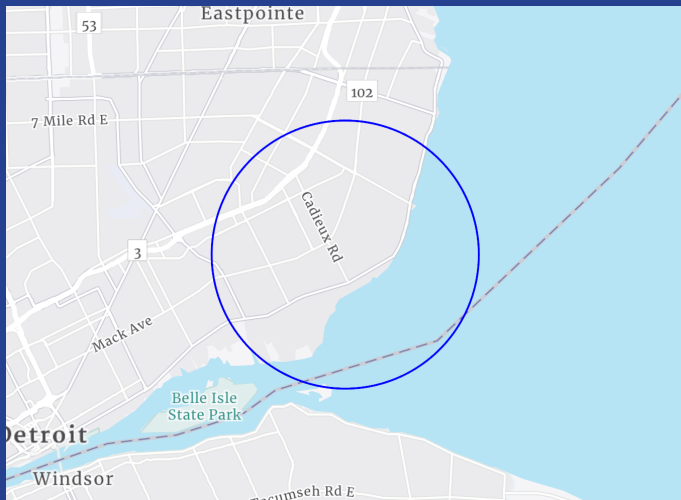
Home value



Housing: year built



U.S. Census Bureau, Esri forecasts for 2020 and 2025, Esri Vintage 2020 Time Series



Population trends & key indicators

17145 Kercheval Ave, Grosse Pointe, Michigan, 48230 | 3 mile radius

90,384	34,055	2.63	39.3	\$53,922	\$198,277	122	110	54
Population	Households	Avg size household	Median age	Median household income	Median home value	Wealth index	Housing affordability	Diversity index

Mortgage indicators



\$10,609

Avg spent on mortgage & basics



15.4%

Percent of income for mortgage

Population by generation



6.2%

Greatest gen:
born 1945/earlier



22.9%

Baby boomer:
born 1946 to 1964



20.1%

Generation x:
born 1965 to 1980



21.1%

Millennial:
born 1981 to 1998



25.1%

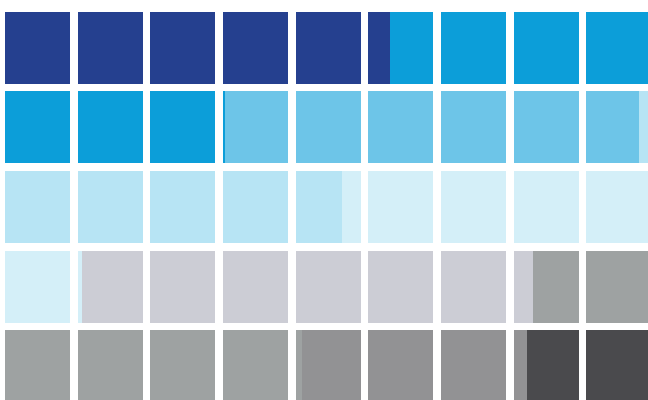
Generation z:
born 1999 to 2016



4.6%

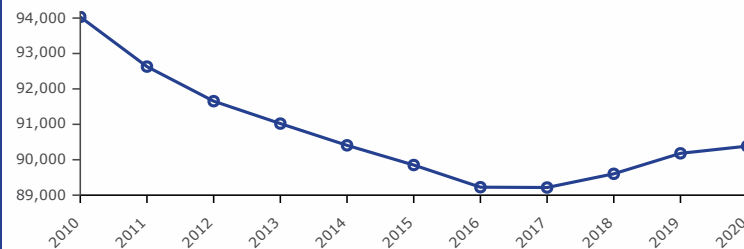
Alpha: born 2017 to present

Population by age

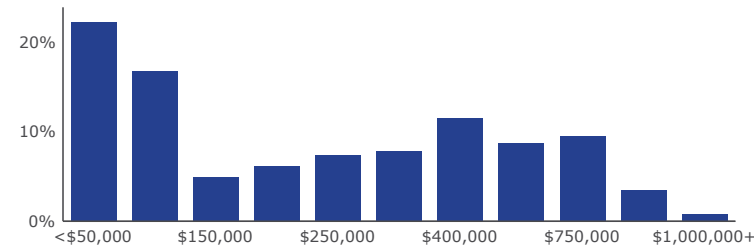


Age 0-9 (%)	Age 10-19 (%)	Age 20-29 (%)	Age 30-39 (%)	Age 40-49 (%)	Age 50-59 (%)	Age 60-69 (%)	Age 70-79 (%)	Age 80+ (%)
12%	15%	13%	11%	12%	12%	13%	7%	4%

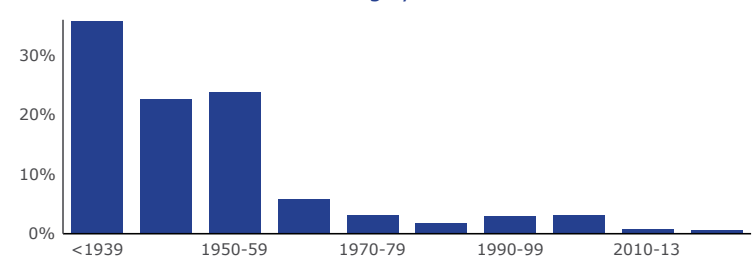
Historical trends: population



Home value



Housing: year built



U.S. Census Bureau, Esri forecasts for 2020 and 2025, Esri Vintage 2020 Time Series